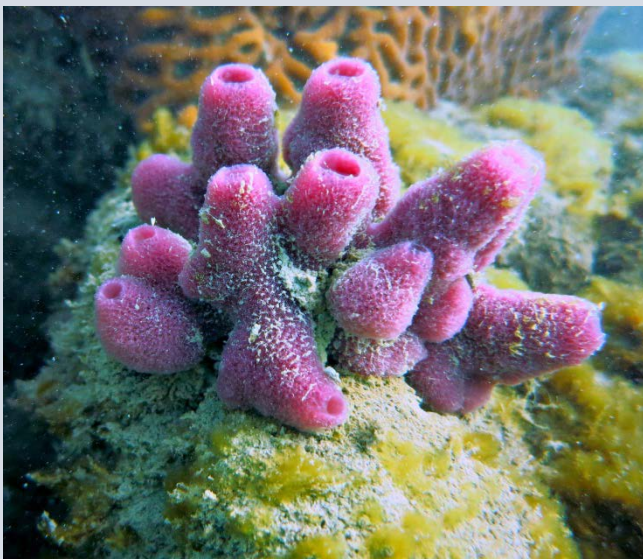
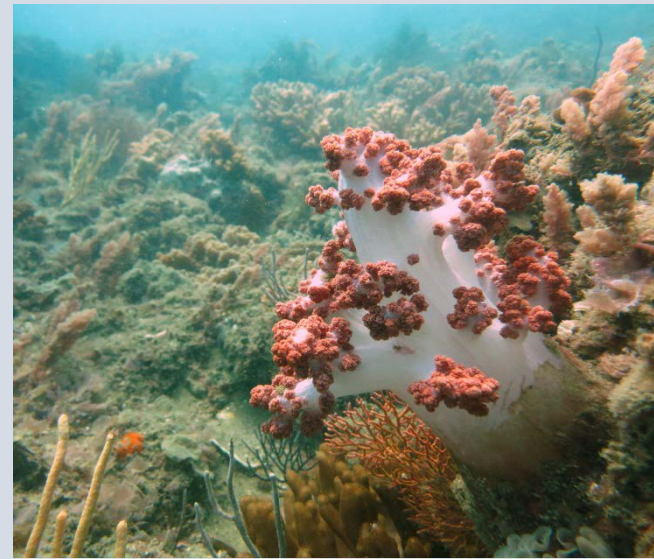


Love your Local Reefs !

Fraser Coast reefs are more than 6,000 years old. Today, these reefs host a mix of tropical and subtropical marine life including nudibranchs, sea turtles and sea snakes. Research shows these reefs are more closely related to the Great Barrier Reef than the reefs of nearby Moreton Bay. Reef Check Australia works with local partners and trained volunteers to monitor Fraser Coast reefs. Our data shows that Woongarra Coast reefs are dominated by soft corals, while Hervey Bay reefs are dominated by hard coral (46 species of reef-building corals have been recorded in Hervey Bay alone!) Want to learn more? Visit our website and the reefs on your doorstep. Explore, appreciate and protect these unique places.



Images from local reef surveys. Information from local marine scientists including: Ian Butler, Amanda Delaforce, Lyndon Devantier, Kirsten Wortel and Maria Zann. This project has been assisted through the Gladstone Ports Corporation's Community Investment Program.



**Queensland
Government**



Gladstone Ports Corporation
Growth, Prosperity, Community.



Burnett Mary
REGIONAL GROUP
Practical Solutions for Natural Resource Management

